

Main applications :

Resonant circuits for induction heating

### GENERAL CHARACTERISTICS

- Withstand heavy current
- Low losses
- High contact reliability
- Self-Healing

### GENERAL TECHNICAL CHARACTERISTICS

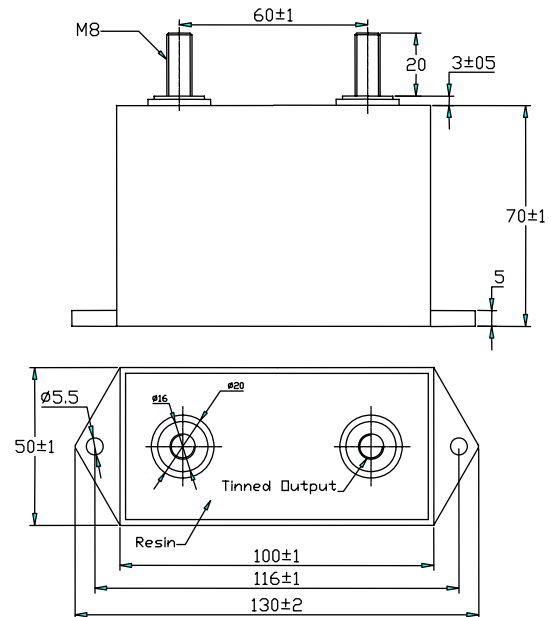
- Reference standards : IEC 61071 60068 60384
- Dielectric : Polypropylene film
- Construction : Dry construction, filled by solid resin, Non-inductive type
- Case : Self extinguishing plastic case UL94V0

### ELECTRICAL CHARACTERISTICS

- Working temperature : -40 to + 85 °C
- Capacitance : 0.06 to 10 $\mu$ F
- Irms (Max.) : 120 A
- Tolerance :  $\pm$  5%,  $\pm$  10%

### TEST METHODS AND PERFORMANCES

- Test voltage between terminals : 2.0xUn for 60s at 25 °C
- Test voltage terminal to case : 3 KV 50Hz for 2sec



### Electrical specifications, ordering codes

Part Number	Capacitance ( $\mu$ F)	Full Power Freq	Irms max. (A)	du/dt (v/ $\mu$ s)	Ipeak (A)	ESR (m $\Omega$ )
		kHz				
<b>Up-peak 500Vac Urms 250Vac</b>						
SCH-500-10	10	8	120	240	2400	1.1
SCH-500-7.5	7.5	10	120	250	1857	1.2
<b>Up-peak 750Vac Urms 350Vac</b>						
SCH-750-6.8	6.8	10	120	300	2040	1.2
SCH-750-5.0	5.0	14	120	300	1500	1.2
<b>Up-peak 1000Vac Urms 400Vac</b>						
SCH-1000-4.7	4.7	10	120	460	2162	1.1
SCH-1000-3.3	3.3	13	110	470	1551	1.2
SCH-1000-1.5	1.5	27	100	1010	1515	1.2
SCH-1000-1.0	1.0	40	100	1390	1390	1.3
<b>Up-peak 1500Vac Urms 550Vac</b>						
SCH-1500-1.0	1.0	33	80	590	590	2.6
SCH-1500-0.68	0.68	32	75	920	626	2.8
SCH-1500-0.60	0.60	36	75	920	552	2.9
<b>Up-peak 2000Vac Urms 750Vac</b>						
SCH-2000-1.0	1.0	15	70	590	590	2.6
SCH-2000-0.68	0.68	22	70	660	449	2.8
SCH-2000-0.47	0.47	27	60	1230	578	2.9
SCH-2000-0.33	0.33	39	60	1350	446	3.1
<b>Up-peak 3000Vac Urms 1000Vac</b>						
SCH-3000-0.24	0.24	33	50	1960	470	3.2
SCH-3000-0.15	0.15	48	45	2950	443	3.5
SCH-3000-0.12	0.12	53	40	3350	402	3.8
SCH-3000-0.10	0.10	64	40	3350	335	4.1
SCH-3000-0.06	0.06	80	30	4740	284	7.6